

Captivated by the Cape

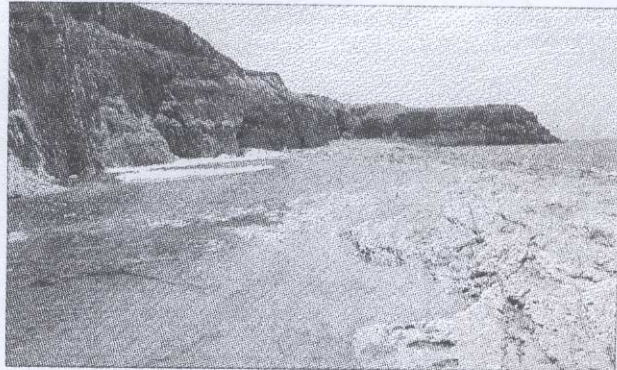
Burnt Cape Ecological Reserve rises up from the cold North Atlantic to spout some of the world's most cherished botanical and geological wonders.

Rare plants can be found nestled amongst the rugged stone, mossy mounds and low shrubbery that cover the natural land mass near Raleigh.

It is quickly becoming one of the most popular destinations for visitors who embark on the Viking Trail because of its rugged, spectacular and pristine natural beauty.

The reserve is home to more than 30 species of rare plants, a type of limestone that's rich in a variety of fossils, and several marine caves and geological formations. It's little wonder that it is a preferred destination for people interested in nature.

Burnt Cape is an elevated coastal site located on the northwest side of Ha Ha Bay at the northern tip of the Northern Peninsula.



Visitors often lament that it takes more than a day to see all that the Burnt Cape Ecological Reserve has to offer.

The area has been considered an important botanical site since the early 1900s, when M.L. Fernald, a well-known botanist from Harvard University, visited the limestone peninsula.

In recent years, steps have been taken to preserve the significance of the area. It was declared an ecological reserve and sections of the cape, which had been disturbed by quarrying operations, have been rehabilitated.

One of the most important reasons for setting aside the area as a reserve was the presence of many species of rare plants. It's the only known location in the world for the Burnt Cape Cinquefoil and the only known Newfoundland location for two other species, the Dwarf Hawksbeard and the Arctic Lesser Dandelion.

Also significant are the fascinating land features on the cape, including a marine cave known as the 'Big Oven', and a series of small, rounded holes in the limestone known as the 'Cannon Holes'.

Take an interpreted, guided tour of the Burnt Cape Ecological Reserve and experience its natural beauty. Information is available at the Raleigh Town Council building, or at Pistolet Bay Provincial Park, located a short distance from the town.